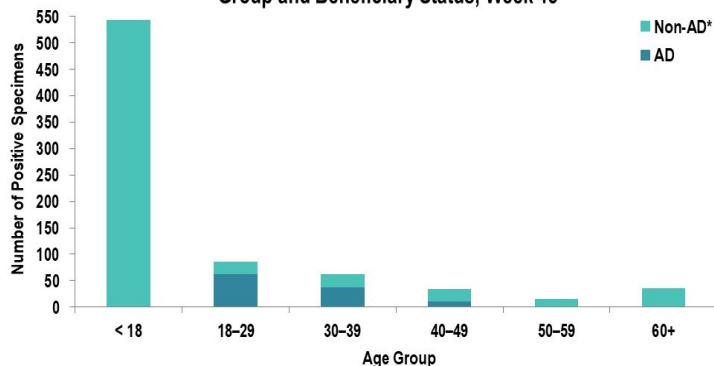


SUMMARY

Influenza A activity increased during surveillance week 45 in the Army population. One hundred and seventy-five positive influenza A and ninety-two influenza B specimens were reported during surveillance week 45. Respiratory syncytial virus (RSV) activity continues to increase in the Army population — 13.8% of specimens tested positive for RSV during surveillance week 45. No influenza-associated hospitalizations were reported during surveillance week 45. Nationwide, influenza activity is increasing, with 4.0% of specimens tested by clinical laboratories being positive for influenza A or B, according to the Centers for Disease Control and Prevention (CDC). There is still time to receive the annual flu vaccine and be protected against the flu. Vaccines are available at medical treatment facilities for military members and beneficiaries, and at some local pharmacies and grocery stores.

DEMOGRAPHICS

Positive Respiratory Specimen Results from Army MTFs by Age Group and Beneficiary Status, Week 45



AD: One hundred and fourteen positive respiratory specimens were collected from active duty (AD) service members (SMs) during week 45; 55.3% (n=63) of the positive specimens were collected from SMs 18 – 29 years of age.

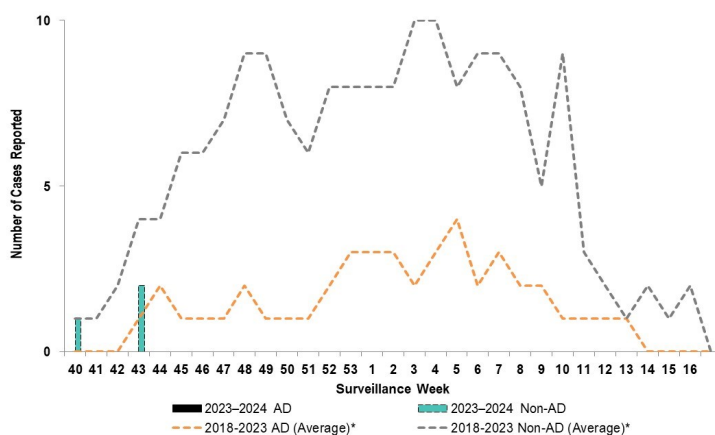
Non-AD: Six hundred and sixty positive respiratory specimens were collected from non-AD individuals during week 45; 82.3% (n=543) of the positive specimens were collected from individuals under 18 years of age.

*Non-AD=All individuals that are not active duty service members.

The age and beneficiary status of some cases were not available. Therefore, all calculations involving these variables were conducted using only available data. Differences in total results, and age- and beneficiary status-specific results may be noted throughout the report.

INFLUENZA-ASSOCIATED HOSPITALIZATIONS

Army Influenza-Associated Hospitalizations Reported in DRSi by Onset Week



No influenza-associated hospitalizations with an onset date in week 45 were reported to the Disease Reporting System internet (DRSi). The season total thus far is 3 hospitalizations. The week 45 average during the 2018 – 2023 seasons was 6 hospitalizations (with an average of 18 hospitalizations reported from the start of the season through week 45).

The DRSi does not capture cases older than 65 years old for influenza-associated hospitalizations.

*Data from the 2020–2021 and 2021–2022 influenza seasons are not included in comparison calculations due to the unusually low incidence of influenza.

Data are preliminary and subject to change.

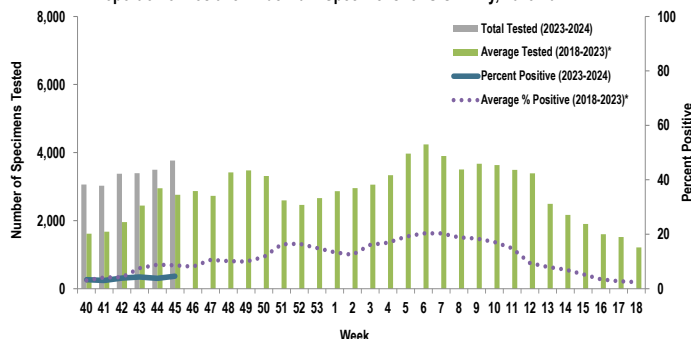
Disclaimer: The mention of any non-federal entity and/or its products is for informational purposes only, and not to be construed or interpreted, in any manner, as federal endorsement of that non-federal entity or its products.

Questions?
Email DCPH-A DEP

INFLUENZA A ACTIVITY - ARMY

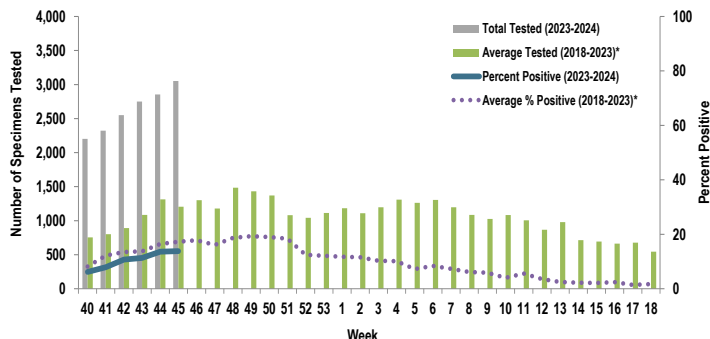
RSV ACTIVITY - ARMY

Proportion of Positive Influenza A Specimens for U.S. Army, 2023-2024



Of the 3,765 specimens tested for influenza A during week 45, 4.6% (n=175) were positive. This is an increase from week 44 (3.8%).

Proportion of Positive RSV Specimens for U.S. Army, 2023-2024



Of the 3,053 specimens tested for RSV during week 45, 13.8% (n=421) were positive.

*Data from the 2020–2021 and 2021–2022 influenza seasons are not included in comparison calculations due to the unusually low incidence of influenza.

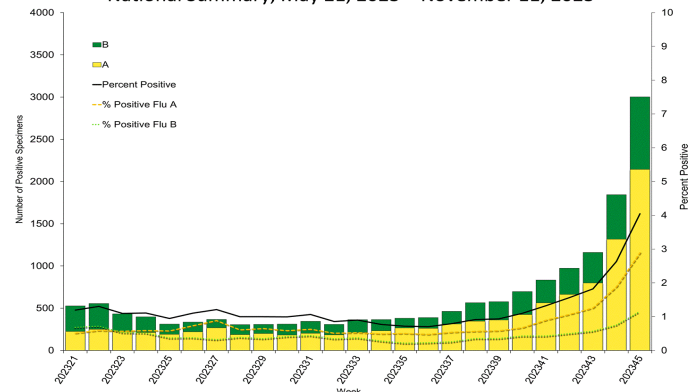
		Week 42	Week 43	Week 44	Week 45	Season Total
Army MTF Laboratory Results, 2023-24	Adenovirus	14	13	19	13	79
	Enterovirus	44	47	67	60	315
	Influenza A	132	147	138	175	784
	Influenza B	44	40	63	92	299
	Parainfluenza	10	16	8	14	68
	RSV	273	310	395	421	1,720
	Negative	2,897	2,870	3,084	3,056	17,322
	Total	3,414	3,443	3,774	3,831	20,587

Of the 3,831 specimens tested during week 45, 20.2% (n=775) were positive for any type of respiratory illness. RSV accounted for 54.3% (n=421) of the positive results, influenza A accounted for 22.6% (n=175), influenza B accounted for 11.9% (n=92), enterovirus accounted for 7.7% (n=60), parainfluenza accounted for 1.8% (n=14), and adenovirus accounted for 1.7% (n=13). Additionally, the reported number of specimens tested increased by 1.5% from week 44 to week 45.

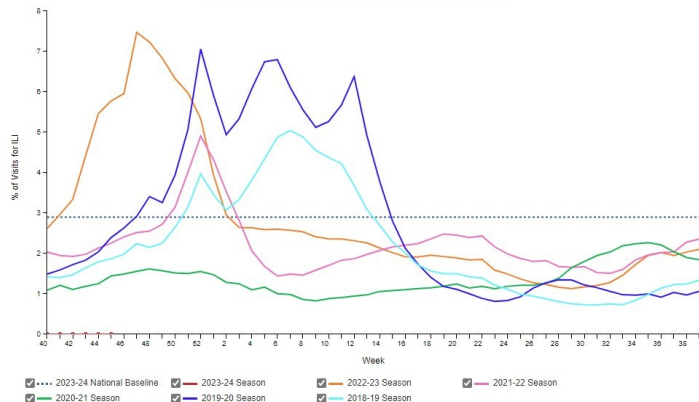
Significantly more tests for influenza have been conducted this season compared to past seasons; 20,117 specimens have been tested for influenza A so far this season compared to the average of 13,400 specimens during the same time period in 2018-2023*.

INFLUENZA-LIKE ILLNESS (ILI) ACTIVITY - UNITED STATES

Influenza Positive Tests Reported to CDC by U.S. Clinical Laboratories, National Summary, May 21, 2023 – November 11, 2023



Percentage of Outpatient Visits for Respiratory Illness Reported by The U.S. Outpatient Influenza-like Illness Surveillance Network (ILINet), Weekly National Summary, 2023-24 Season and Selected Previous Seasons

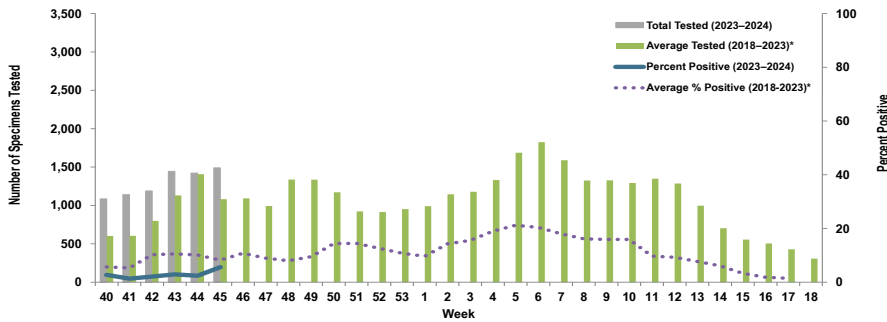


Nationwide in week 45, incident ILI activity was 3.5%; this is above the national baseline of 2.9%. Additionally, a total of 74,217 specimens were tested for influenza by select clinical laboratories and submitted to the CDC; 3,002 (4.0%) were positive. Influenza A accounted for 71.4% (n=2,144) of the total positive specimens.

Locations providing Week 45 laboratory data as of 16 November 2023: Camp Zama, Ft. Belvoir, Ft. Bliss, Ft. Campbell, Ft. Cavazos, Ft. Carson, Ft. Drum, Ft. Eisenhower, Ft. Eustis, Ft. Gregg-Adams, Ft. Huachuca, Ft. Irwin, Ft. Jackson, Ft. Johnson, Ft. Knox, Ft. Leavenworth, Ft. Leonard Wood, Ft. Lewis, Ft. Liberty, Ft. Meade, Ft. Novosel, Ft. Riley, Ft. Sam Houston, Ft. Sill, Ft. Stewart, Korea, Landstuhl Regional Medical Center, Redstone Arsenal, Tripler Army Medical Center, the U.S. Military Academy, and Walter Reed National Military Medical Center.

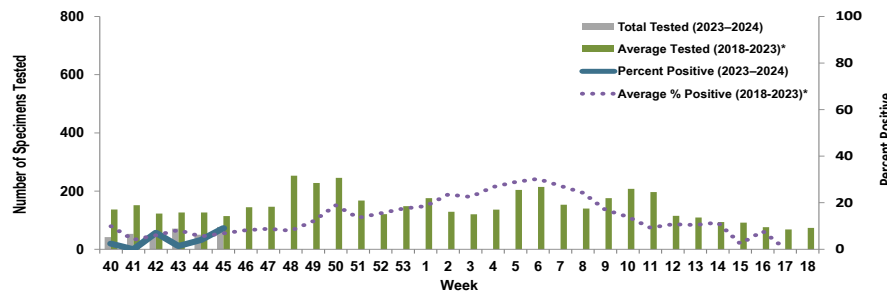
Proportion of Influenza A Positive Specimens by Week and Medical Readiness Command, 2023–2024 as Compared to 2018–2023*

Medical Readiness Command - East



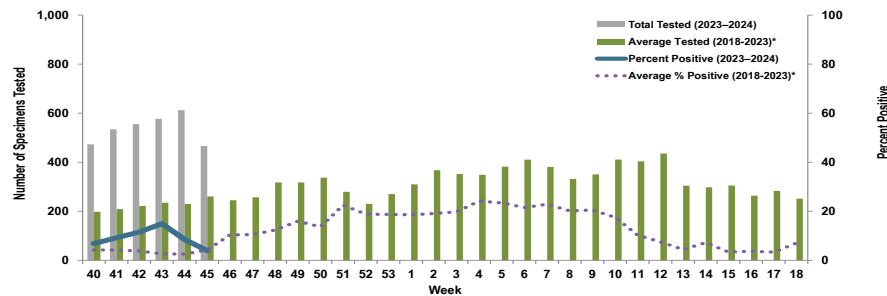
Week 45			
Age Group	AD	Non-AD	Season Total
< 18	0	36	83
18–29	15	4	73
30–39	11	5	39
40–49	2	3	17
50–59	0	4	6
60+	0	4	11
Total	28	56	229

Medical Readiness Command - Europe



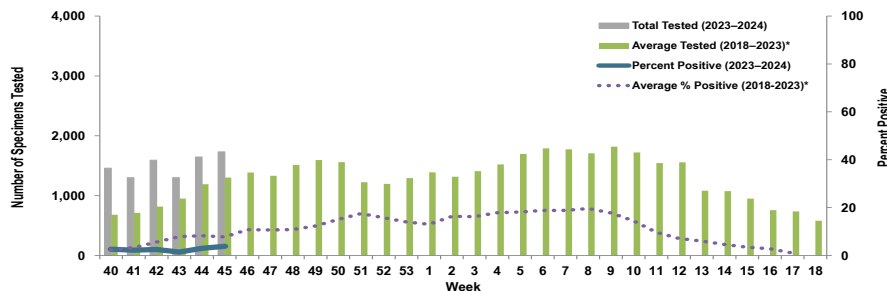
Week 45			
Age Group	AD	Non-AD	Season Total
< 18	0	0	0
18–29	4	0	6
30–39	0	1	4
40–49	1	0	3
50–59	0	1	1
60+	0	0	0
Total	5	2	14

Medical Readiness Command - Pacific



Week 45			
Age Group	AD	Non-AD	Season Total
< 18	0	9	114
18–29	1	0	110
30–39	2	1	39
40–49	1	2	18
50–59	0	0	6
60+	0	2	14
Total	4	14	301

Medical Readiness Command - West



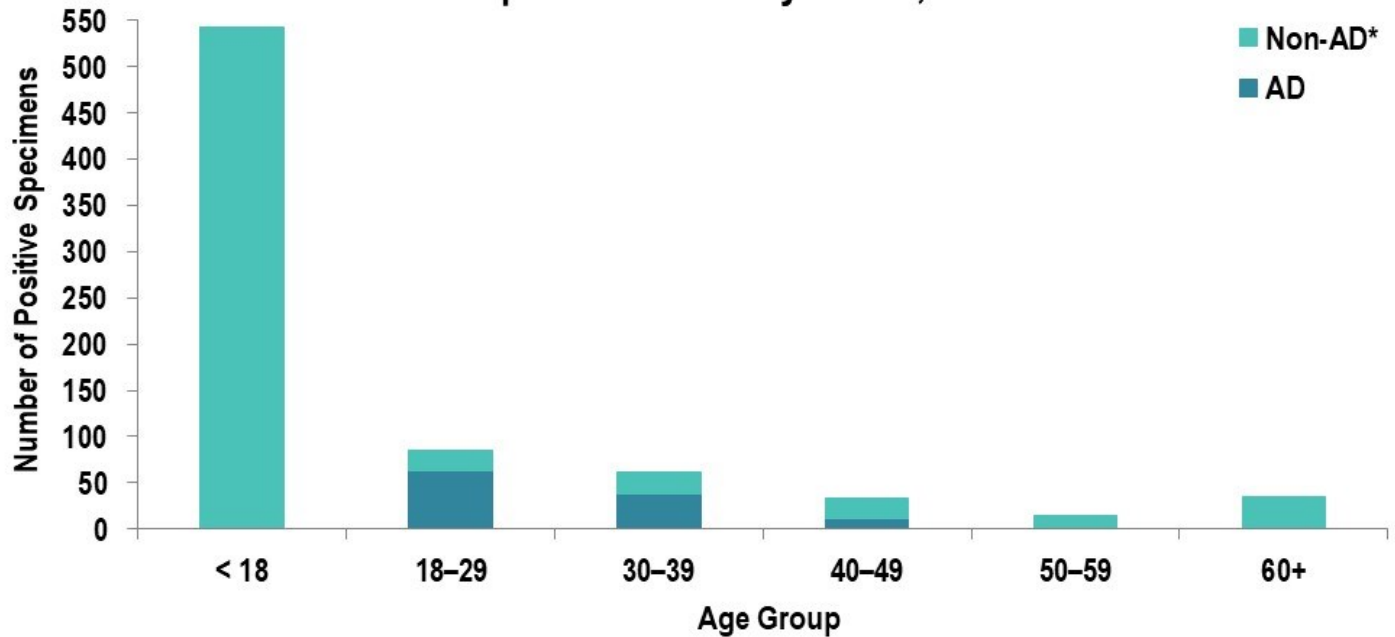
Week 45			
Age Group	AD	Non-AD	Season Total
< 18	0	26	77
18–29	7	5	69
30–39	7	5	39
40–49	1	6	22
50–59	0	1	15
60+	0	8	18
Total	15	51	240

*2018–2019, 2019–2020, and 2022–2023 influenza seasons. Data from the 2020–2021 and 2021–2022 influenza seasons are not included in comparison calculations due to the unusually low incidence of influenza.

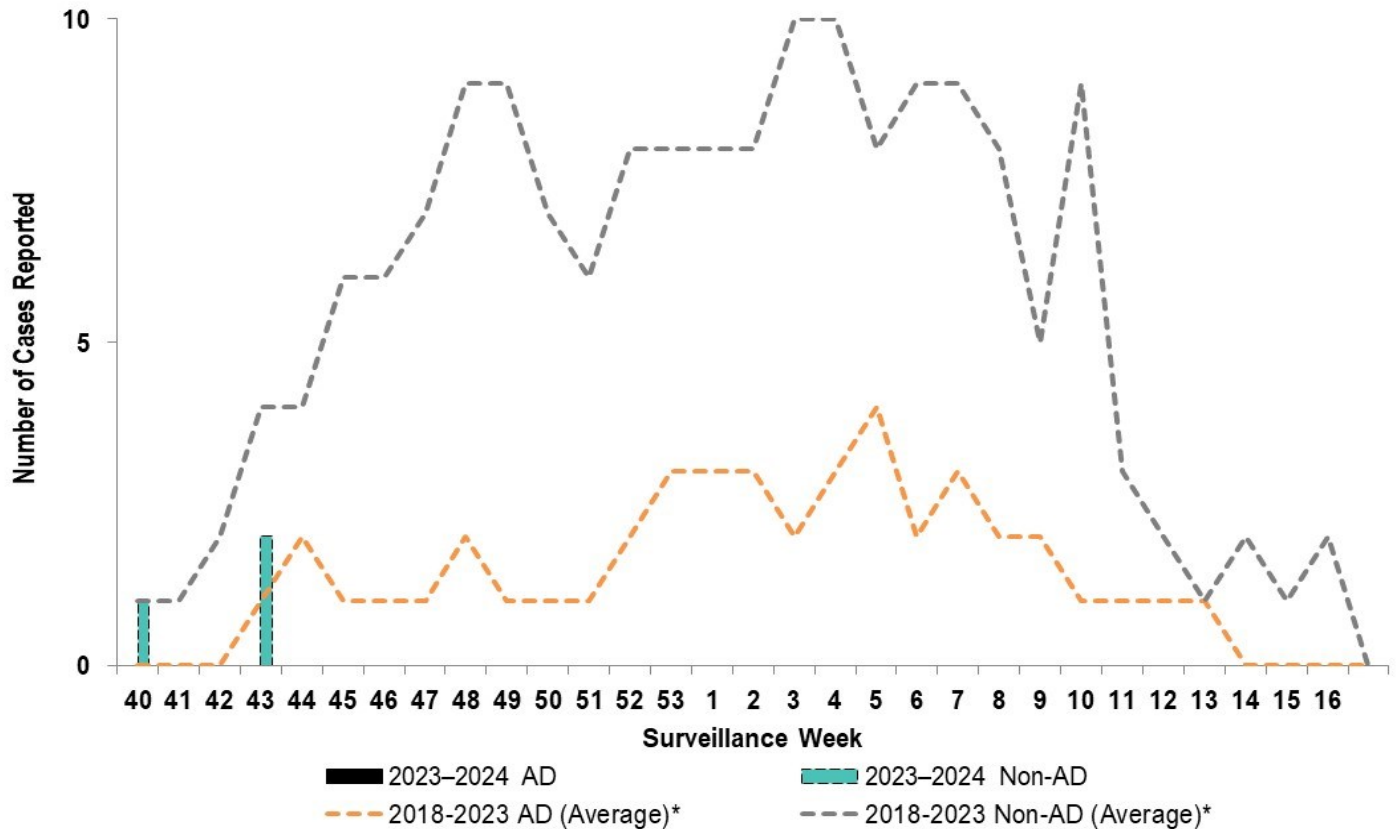
Number of Positive Influenza A Specimens by Region and Duty Status

Region	Week 42		Week 43		Week 44		Week 45	
	AD	Non-AD	AD	Non-AD	AD	Non-AD	AD	Non-AD
MRC-East	11	14	15	27	10	24	28	56
MRC-Europe	2	1	1	0	1	1	5	2
MRC-Pacific	27	37	23	63	10	42	4	14
MRC-West	13	27	7	11	14	36	15	51

Positive Respiratory Specimen Results from Army MTFs by Age Group and Beneficiary Status, Week 45

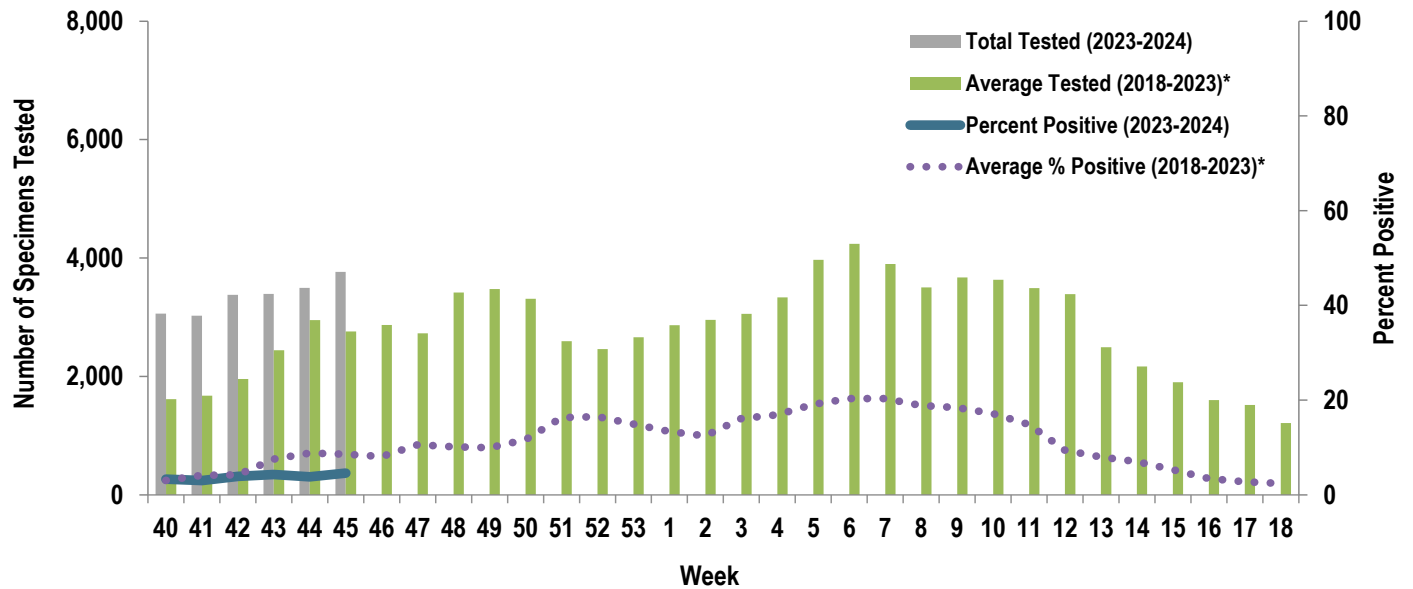


Army Influenza-Associated Hospitalizations Reported in DRSi by Onset Week



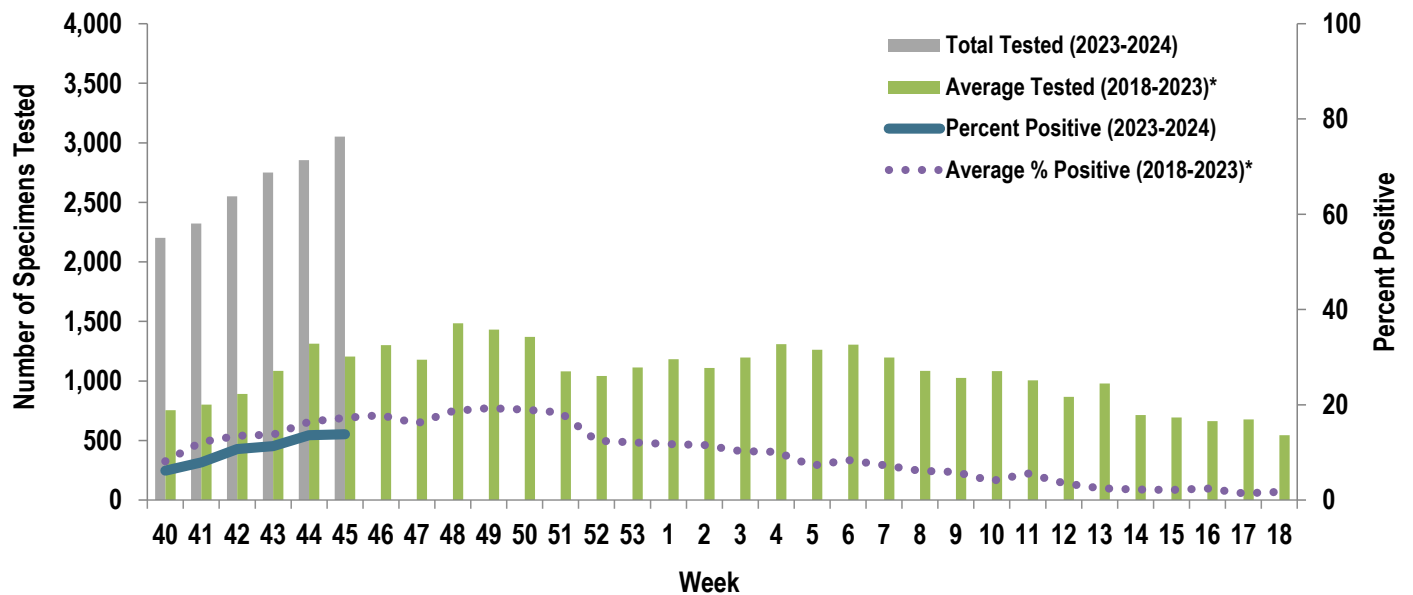
*2018–2019, 2019–2020, and 2022–2023 influenza seasons. Data from the 2020–2021 and 2021–2022 influenza seasons are not included in comparison calculations due to the unusually low incidence of influenza.

Proportion of Positive Influenza A Specimens for U.S. Army, 2023-2024



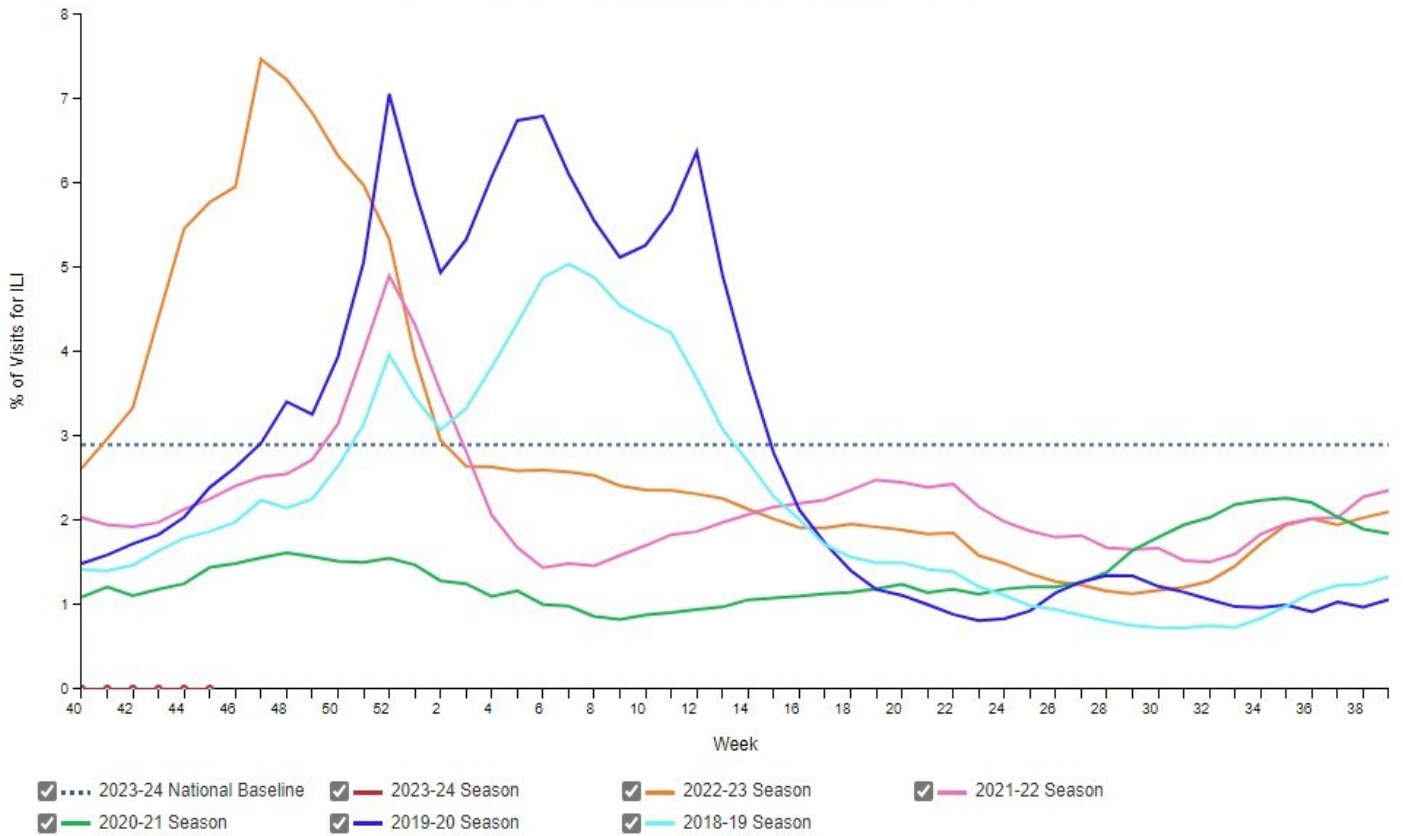
*2018–2019, 2019–2020, and 2022–2023 influenza seasons. Data from the 2020–2021 and 2021–2022 influenza seasons are not included in comparison calculations due to the unusually low incidence of influenza.

Proportion of Positive RSV Specimens for U.S. Army, 2023-2024



*2018-2019, 2019-2020, and 2022-2023 influenza seasons. Data from the 2020-2021 and 2021-2022 influenza seasons are not included in comparison calculations due to the unusually low incidence of influenza.

Percentage of Outpatient Visits for Respiratory Illness Reported by
The U.S. Outpatient Influenza-like Illness Surveillance Network (ILINet),
Weekly National Summary, 2023-24 Season and Selected Previous Seasons



Influenza Positive Tests Reported to CDC by U.S. Clinical Laboratories, National Summary, May 21, 2023 – November 11, 2023

